

# Mitcorp

INDUSTRIAL VIDEOSCOPE

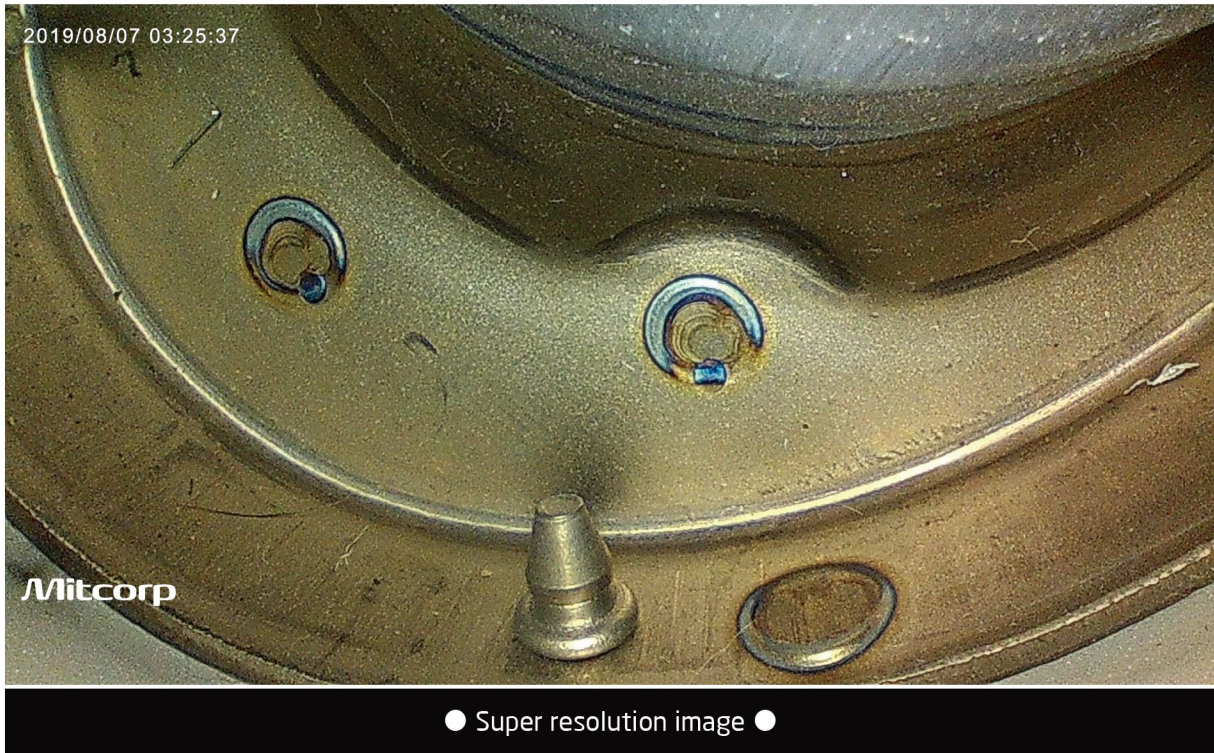
■ CLEARNESS ■ SHARPNESS ■ BRIGHTNESS



**X2000 HD VIDEOSCOPE**

## Excellent Image Quality

- Super resolution image. (Still image 2560\*1440; Video 1920\*1080)
- 100°C resistance camera tip



## Best image view experience



Wide view angle 7" IPS TFT-LCD



Advanced exposure value control



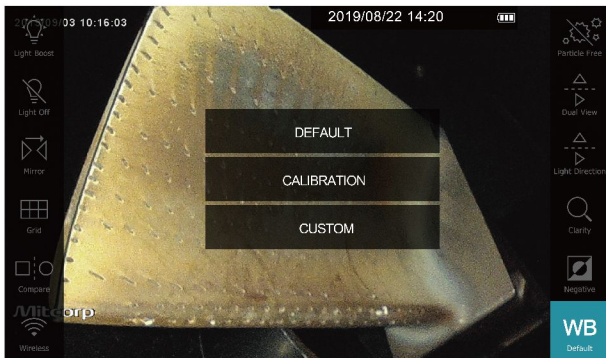
# Excellent humanize user interface



Front /side Dual view(with mirror) at once



Support image sharpness fine tune



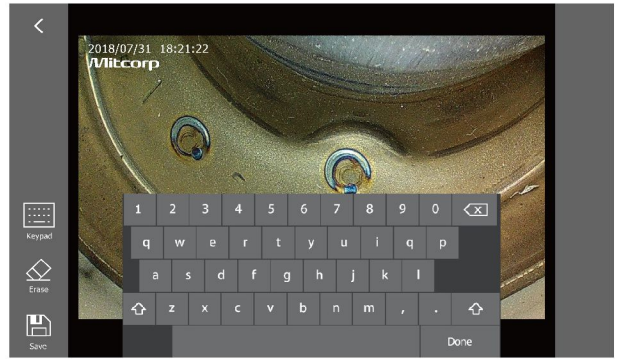
3 modes white balance



100°C resistance warning & auto shut down protection

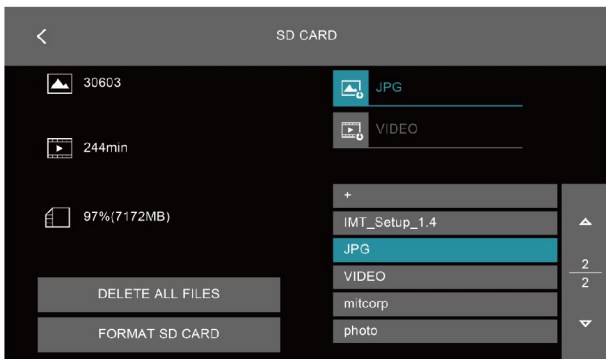


Patented particle free effect (with mirror)

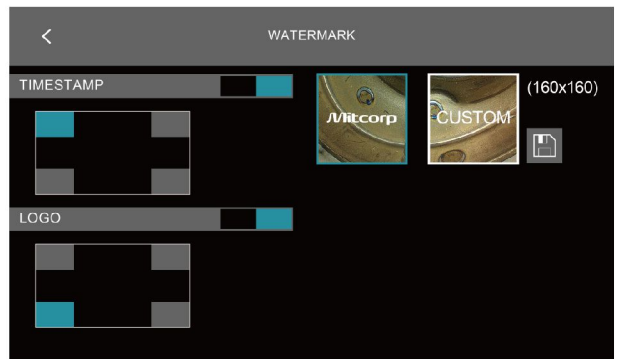


Editable image annotation

# Advanced file management



Support user define image storage folder

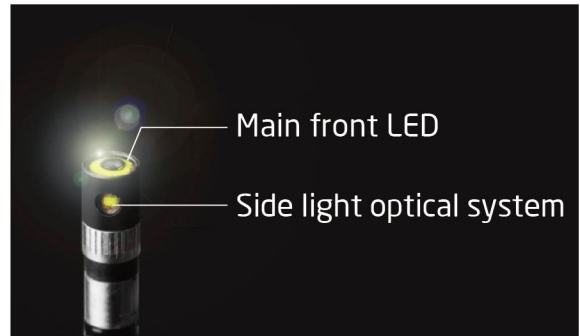


Support user define time stamp/logo watermark

## Tungsten articulation probe



Smoothly articulation control & lock system



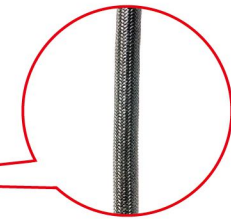
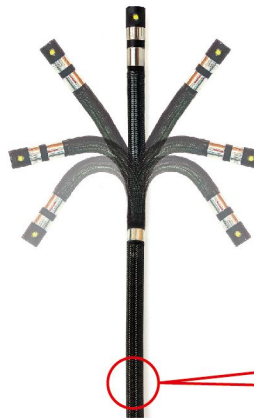
Ultra luminance front LED. Patented side LED optical system



High rigidity tube (35cm)



Shorter distal end & bending radius



Scratch resistance tungsten braids

## Connectivity

- HDMI port to TV/monitor for HD quality image viewing
- USB type C port to PC as Web-Cam or SD card reader
- Wi-Fi connect to mobile devices to view and share pictures





## Ruggedized Storage



Built-in storage reel for tube




IP67 trolley case with extendable handle

## Accessories




\* Also include: clean set, SD card, user manual

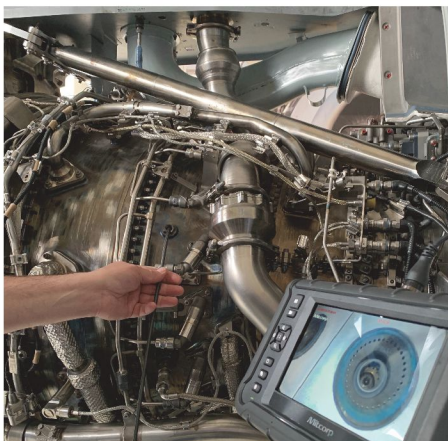
# Specifications

X2000		
		
Display		7" LCD, Resolution 1024x600
Power Supply	AC adapter	100V~240V, 12V 2.5A. 50-60Hz
	BATTERY	Rechargeable Li Battery 3.6V 9800 mAh, approximately operation time: 5hrs, charging time: 4hrs.
Video Output	HDMI	TYPE D; HDMI 1.4 transmitter with 3D format and CEC support
	USB	USB TYPE C, supporting USB full-speed and high-speed data transmission
	Wi-Fi	IEEE802.11B/G/N
Operating temperature		With battery power- 0~40°C With AC adapter power- 0~35°C
Drop resistance		1m
Relative humidity		Max 95% non-condensing
Dust proofing and water proofing		IP 57
Insert Tubes interchangeability		6.0mm HD series; 3.9mm series
Software features		
Image features		Digital zoom 3X, 10 steps brightness control
Sharpness control		Clarity-on/off
Annotation		Maximum 10 annotation marks can be built in a pic, maximum 24 characters in each mark
Timestamp / watermark		for snapshot / video recording (on/off)
Image management		User define pic / video folder available
On-screen display functions		Light boost, light off, mirror, grid, compare, wireless, particle free, dual view, light direction, negative, auto white balance
White balance		Manual adjustable (default, calibration, custom)
Recording management		
Storage media		SDHC up to 32G
Overlay		YY/MM/DD h:m, battery capacity
Thumbnail image display		9 grids album mode
Still image	Resolution	2560x1440 (S-HD); 1280x720 (HD)
	Recording format	.jpg
Video	Resolution	1920x1080
	Recording format	.mov / H.264
	Audio input	Built-in microphone (on/off)
Frame Rate		30FPS

\* High temperature during charging/ operation may cause battery degradation of performance and life.

6.0mm 360 Articulation probe		
		
Joystick console Dimensions (WxDxH)		139.4 x 193 x 84.2mm (w/o SR and insert tubes)
Net weight		2m:700g / 3m:866g (approximately)
Joystick console buttons		Brightness+, Brightness-, snapshot/ record
Lock and move		Lock/ unlock switch on console
Probe head diameter		6.0mm
Probe length		2m / 3m
Probe head material		Stainless Steel
Probe material		Tungsten braid
Probe head length		19.3mm
Direction of View		Front view
Field of View (FOV)		90°
Depth of Field (DOF)		10mm~100mm
Illumination		Front / Side LEDs
Articulation angle (up/down/right/left)		2m, 3m full ways ≥120°
Operating temperature		In air: -10~100°C In water: 10~30°C
Dust proofing and water proofing		Joystick console: IP 54 Insert Tube: Under water 1m for 30 minutes
Relative humidity		Max 95% non-condensing
Liquid resistance		Operable when exposed to machine oil, light oil or 5% saline solution
Accessories		
HDMI cable (AV-out)		1.8m, HDMI 1.4a, D TYPE
USB cable (data transfer)		1m, type C to standard type A
USB charging cable		1m, USB-DC jack (for power bank)
SD card		16G
DC power adapter		100V~240V, 12V 2.5A 50~60 Hz
Side-view mirror		6.0mm
Shoulder strap		Polyester
Hand strap		Polyester
Sun visor		Steel / Plastic
Dual-view mirror		6.0mm
Ground wire		3m with DC jack / PC-in / clamp
Insulation cap		90mm rubber, Ø20mm
Rigid sleeve	Grip material: Rubber/ Aluminum/ Plastic Tube material: Stainless steel	
	for 6.0mm probe:	for 3.9mm probe:
	OD: 8mm / ID: 7mm Protection ring: OD: 10mm extension joint ring: OD: 11.2mm	OD: 6mm / ID: 5mm Protection ring: OD: 8mm extension joint ring: OD: 10mm
Trolley case		HDPE EVA with storage reel





website: [www.mitcorp.com.tw](http://www.mitcorp.com.tw)

✉ e-mail: [sal@mitcorp.com.tw](mailto:sal@mitcorp.com.tw)

2F., No.75, Wenhua 1st Rd., Guishan, Taoyuan 333, Taiwan  
T+886-3-328-7177 F+886-3-328-7176



LinkedIn: Mitcorp



FB: Mitcorpglobal



Youtube: Mitcorpglobal

