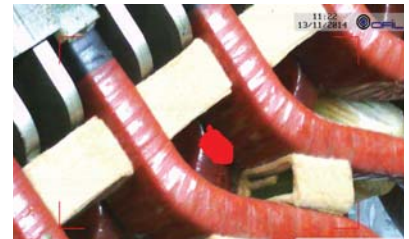
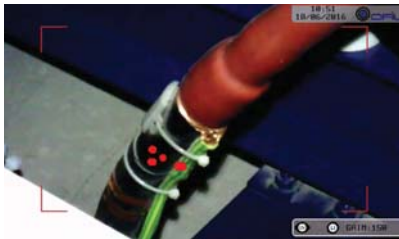


DayCor® SCALAR

A compact handheld bi-spectral UV & Visible camera for indoors corona detection. Scalar is used for gauging the condition of high & medium voltage electrical apparatuses. Scalar assists revealing imperfections correlated with partial discharges. DayCor® Scalar presents in real time the discharge radiation and its radiating source. Scalar performs well in artificially lit as well as in dark environments having a built-in powerful LED flashlight and backlit keys



Scalar is used by utility maintenance teams to monitor installations in dark cabinets and rooms. Manufacturers & workshops use SCALAR for Factory Acceptance and QA

tests. Scalar is used in mines to detect discharges and sparks and thereby contributes to the safety of working teams.



VIDEO & STILLS

MPEG4 video clips and BMP still pictures. Stored on a removable flash card.



PLAYBACK

Preview the stored media either on the camera's LCD or on an external monitor via mini USB drive.



FIELD OF VIEW

Wide field of view 15° x 11° enables inspection wide sectors from short distance, typical to indoor conditions.



LCD

A wide 4.3" deluxe transmissive LCD, 800X480 px delivers sharp and vivid imaging of the inspected scenes.



LED FLASHLIGHT

Integrated LED flashlight with 2 levels of brightness, improves quality of recorded media. Backlit buttons facilitate maneuvering in poor lit conditions.



FOCUS & ZOOM

Semi auto and manual focus ranging 0.5m | 20" to infinity. 3 steps UV digital zoom.

ACCESSORIES: see pages 12-13



COMPACT & LIGHT WEIGHT

A sleek design, palm grip 0.95Kg | 2.09lb weight. 28L x 12W x 9H cm | 11 x 4.7 x 3.5"



INTUITIVE OPERATION

On screen menu and swift buttons. Straight forward operation. Preset stored settings.



LONG BATTERY RUN-TIME

Power sources: a rechargeable Li-Ion battery, run time of over 3 hours or 9V DC. Internal charging.



COMMUNICATION PORTS

RS232, USB



HIGH SENSITIVITY TO UV

UVb spectral range: 310-320nm. Minimum UV discharge detected: 15pC @1m, as required for short distances inspections.



In lab
Corona on cable