

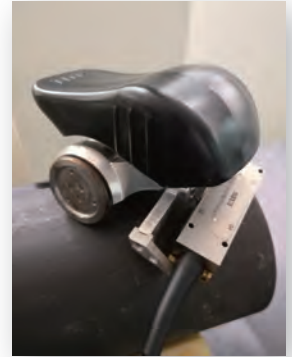
Corrosion Mapping Scanner

MPS-02



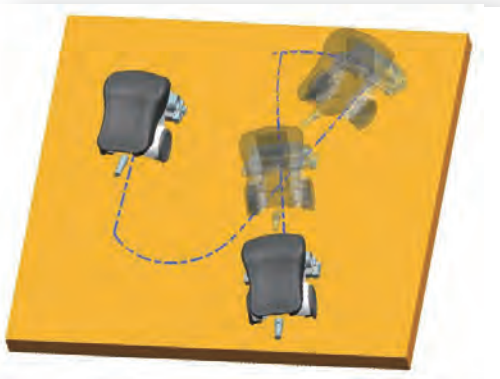
Free 2D Scanner

The MPS-02 is specially used for Phased Array Inspection on Corrosion. It can be used for phased array testing on small&medium areas, immersion pipeline and even for scanning in any direction in two-dimensional space.



- ⊕ Flexibility: Suitable for plates, pipes and complex workpieces.
- ⊕ Real-time: Real-time display of probe position and statistical information.
- ⊕ Efficiency: Wide coverage, high density C scan, double crystal and phased array focusing.
- ⊕ Compatibility: Customizable probe holder size, suitable for a variety of probe types.

Superior Features

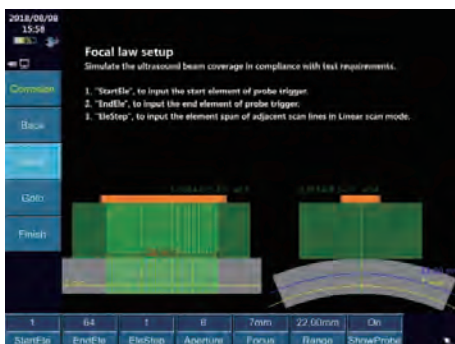


- Step recording by biaxial coding

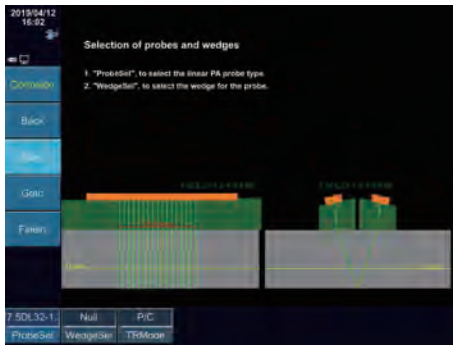


- Two-dimensional scanning image

Data Acquisition Software



- Professional testing process wizard, allowing users to quickly get familiar with the testing process and perform quick setup and calibration.
- Workpiece simulation and simulating detection coverage for adjusting the detection process.



- Scanning strategy interface for the operator to understand the scanning plan of the entire workpiece before the scan.
- Tracking gate synchronized with interface wave that monitors minimum wall thickness and high-density C-scan.
- Permanent storage of scanned data and online report generation.

On-site Application

- Scanning on plate (thickness 8mm)



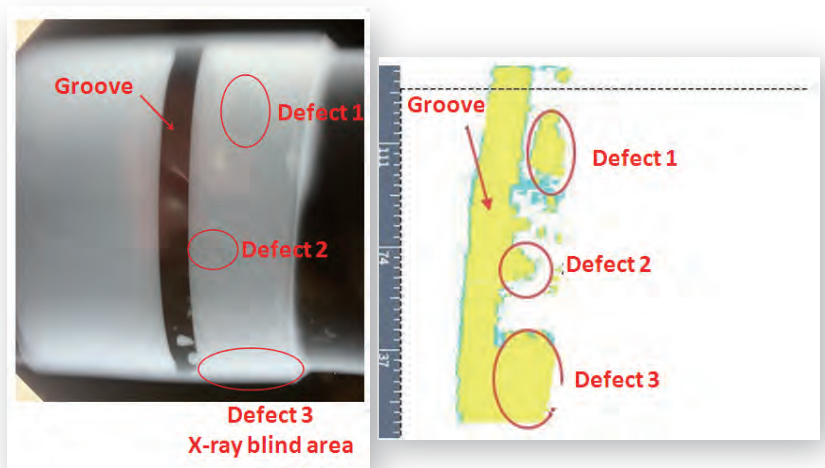
- Test result



- Scanning on pipe (wall thickness 4mm)





- Test result



Technical Parameters

Item	Description	
Weight	0.8kg	
Dimension(W×H×D)	130mm×100mm×90mm	
Packing Dimension(W×H×D)	440mm×340mm×190mm	
Scan Method	Manual, 2D scanning	
Encoder Connector Type	6-core	
Encoder Precision	0.13 mm/steps	
Encoder IP Code	IP68	
Suitable Tested Work Piece	Plate	
	Pipe	Outside Diameter > 100mm
Working Condition	Temperature	0°C ~+40°C

Optional Probe and Accessories

SIUI DLA Probe	5.0DL32-1.3-4.8-F8E	
	7.5DL32-1.3-4.8-F8E	
	5.0DL32-1.0-4.8-F8E	
	7.5DL32-1.0-4.8-F8E	
Auto Irrigation Device	IA-01	
Manual Irrigation Device	IH-05	

SIUI

Infrared - Soluções em END.

Fale conosco:
 PABX: (11) 4419-3192
 contato@infraredmanutencao.com.br